

# Northern Tier Labor Market Status Report -- December 2021

## Civilian Labor Force:

change since last... month year

Northern Tier	↓	↓
Pennsylvania	↓	↓
United States	↑	↑

## Employed Population:

change since last... month year

Northern Tier	↓	↑
Pennsylvania	↑	↑
United States	↑	↑

## Unemployed Population:

change since last... month year

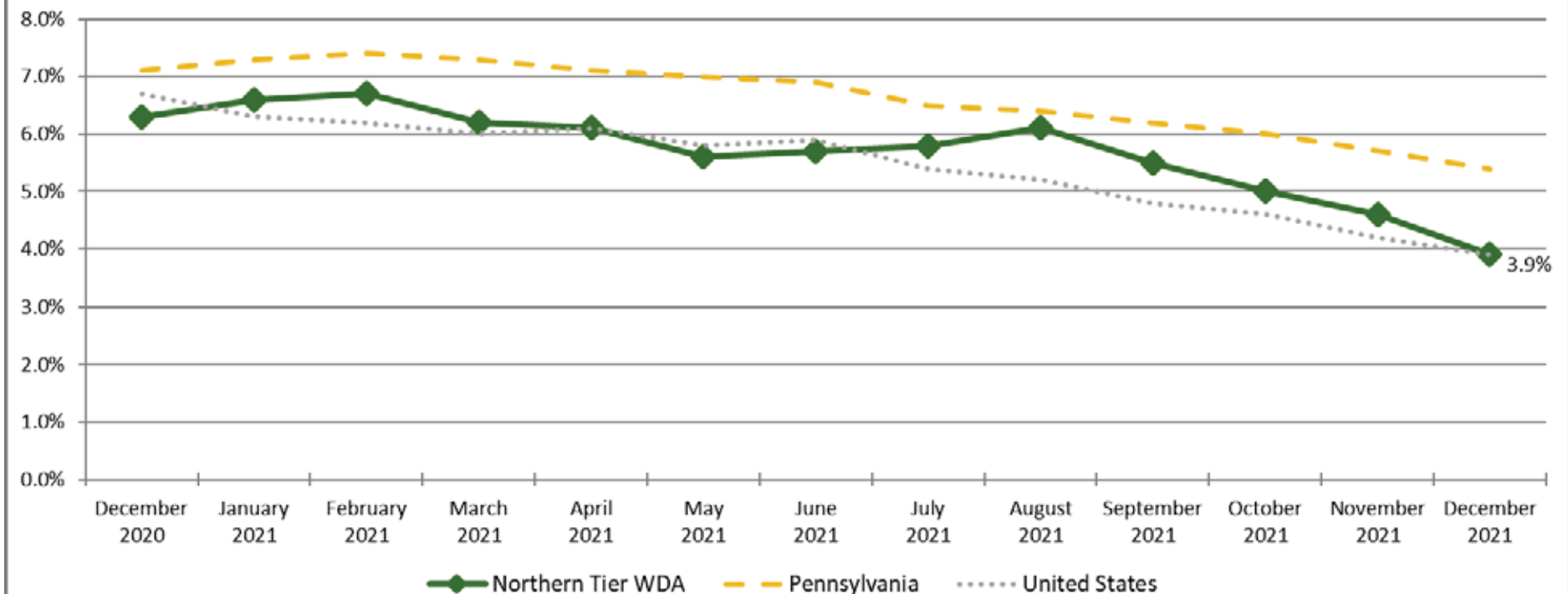
Northern Tier	↓	↓
Pennsylvania	↓	↓
United States	↓	↓

## Unemployment Rate:

change since last... month year

Northern Tier	↓	↓
Pennsylvania	↓	↓
United States	↓	↓

## Unemployment Rates

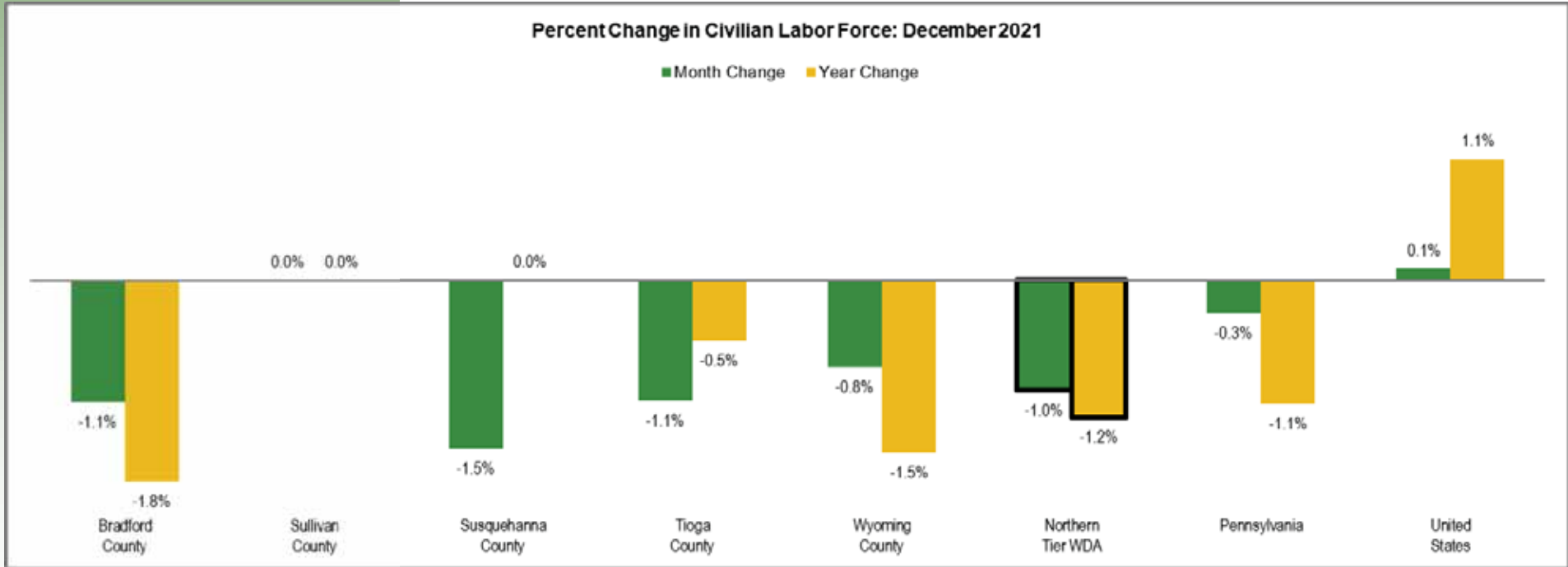


**Civilian Labor Force**

Bradford County	27,600
Sullivan County	2,700
Susquehanna County	19,800
Tioga County	18,600
Wyoming County	12,900

The labor force is comprised of individuals who are working, waiting for a layoff to end, or are actively seeking work. The graph below highlights changes in the civilian labor force as a percentage of the area's total civilian labor force.

	Change Since		
	December 2021	November 2021	December 2020
<b>Northern Tier</b>	<b>81,500</b>	<b>-800</b>	<b>-1,000</b>
Pennsylvania	6,241,000	-18,000	-69,000
United States	162,294,000	168,000	1,727,000

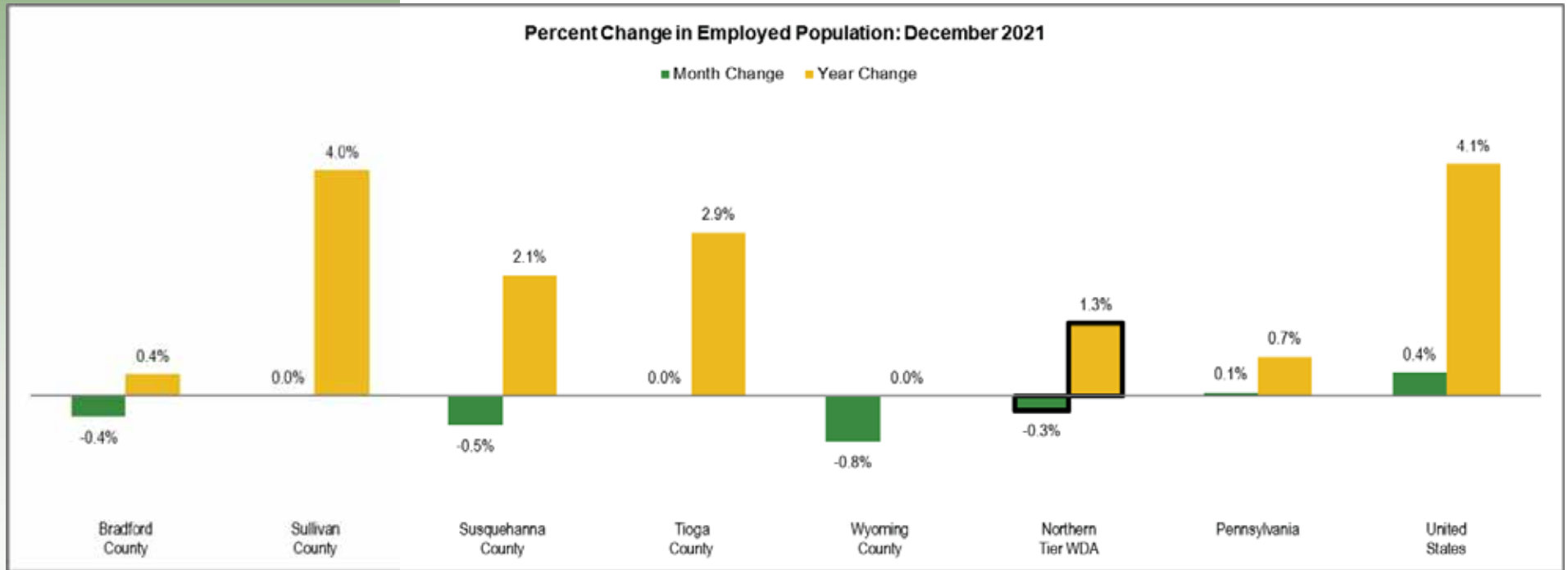


**Employed Population**

Bradford County	26,600
Sullivan County	2,600
Susquehanna County	19,100
Tioga County	17,800
Wyoming County	12,300

The employed population includes individuals who are working. The graph below highlights changes in employment as a percentage of the area's total employment.

	Change Since		
	December 2021	November 2021	December 2020
<b>Northern Tier</b>	<b>78,300</b>	<b>-200</b>	<b>1,000</b>
Pennsylvania	5,903,000	4,000	41,000
United States	155,975,000	651,000	6,145,000

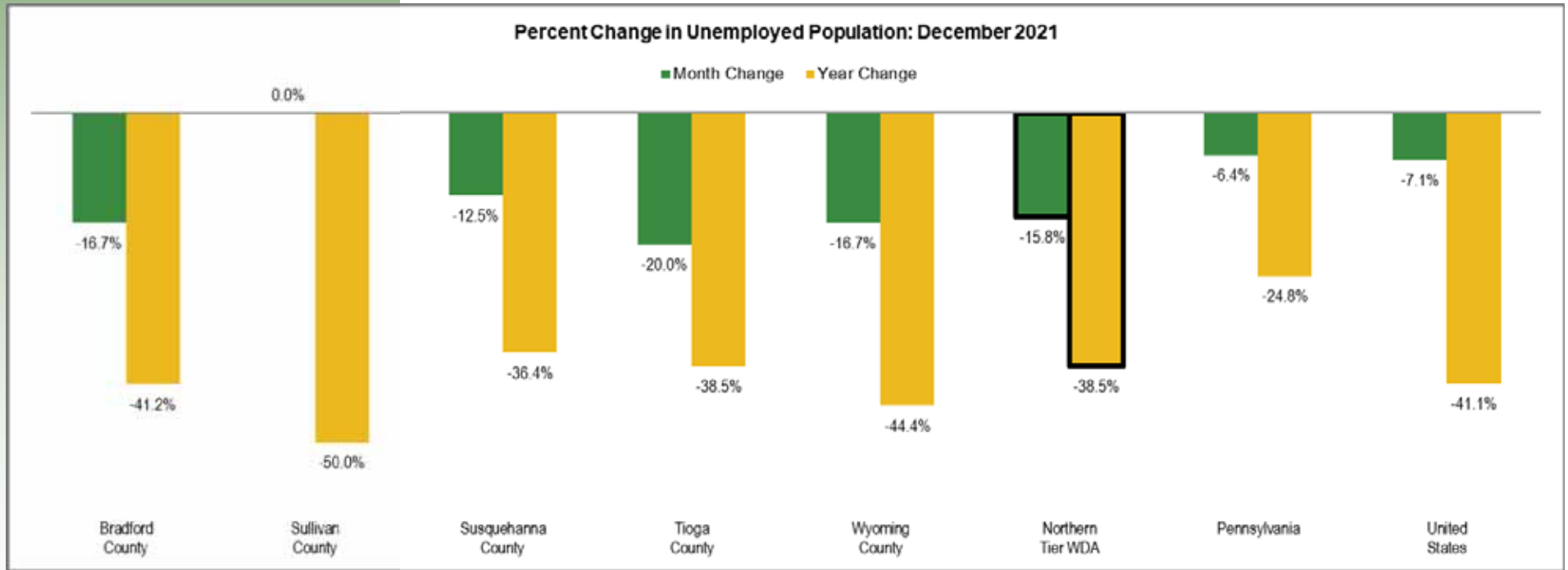


**Unemployed Population**

Bradford County	1,000
Sullivan County	100
Susquehanna County	700
Tioga County	800
Wyoming County	500

The unemployed population is made up of individuals who are not working, but are waiting for a layoff to end or are actively seeking work. The graph below highlights changes in unemployment as a percentage of the area's total unemployment.

	Change Since		
	December 2021	November 2021	December 2020
<b>Northern Tier</b>	<b>3,200</b>	<b>-600</b>	<b>-2,000</b>
Pennsylvania	337,000	-23,000	-111,000
United States	6,319,000	-483,000	-4,417,000



## Unemployment Rates

	December 2021	November 2021	December 2020
Bradford County	3.6%	4.2%	6.0%
Sullivan County	4.2%	5.0%	6.4%
Susquehanna County	3.6%	4.2%	5.5%
Tioga County	4.5%	5.4%	7.2%
Wyoming County	4.1%	4.9%	6.7%
Northern Tier	3.9%	4.6%	6.3%
Pennsylvania	5.4%	5.7%	7.1%
United States	3.9%	4.2%	6.7%

The unemployment rate represents the proportion of individuals in the civilian labor force who are not working, but are waiting for a layoff to end or are actively seeking work. The graph below highlights changes in unemployment rates.

